

## WINTER HAVEN, FL

10,000 **FFBI**<sup>2</sup>



- Light industrial/Business Park area
- Security cameras and gated access
- Overhead Doors/Dock High(12X36)
- Outdoor storage available
- 24 ft. clear span ceiling
- \$3.25 per s.f. NNN

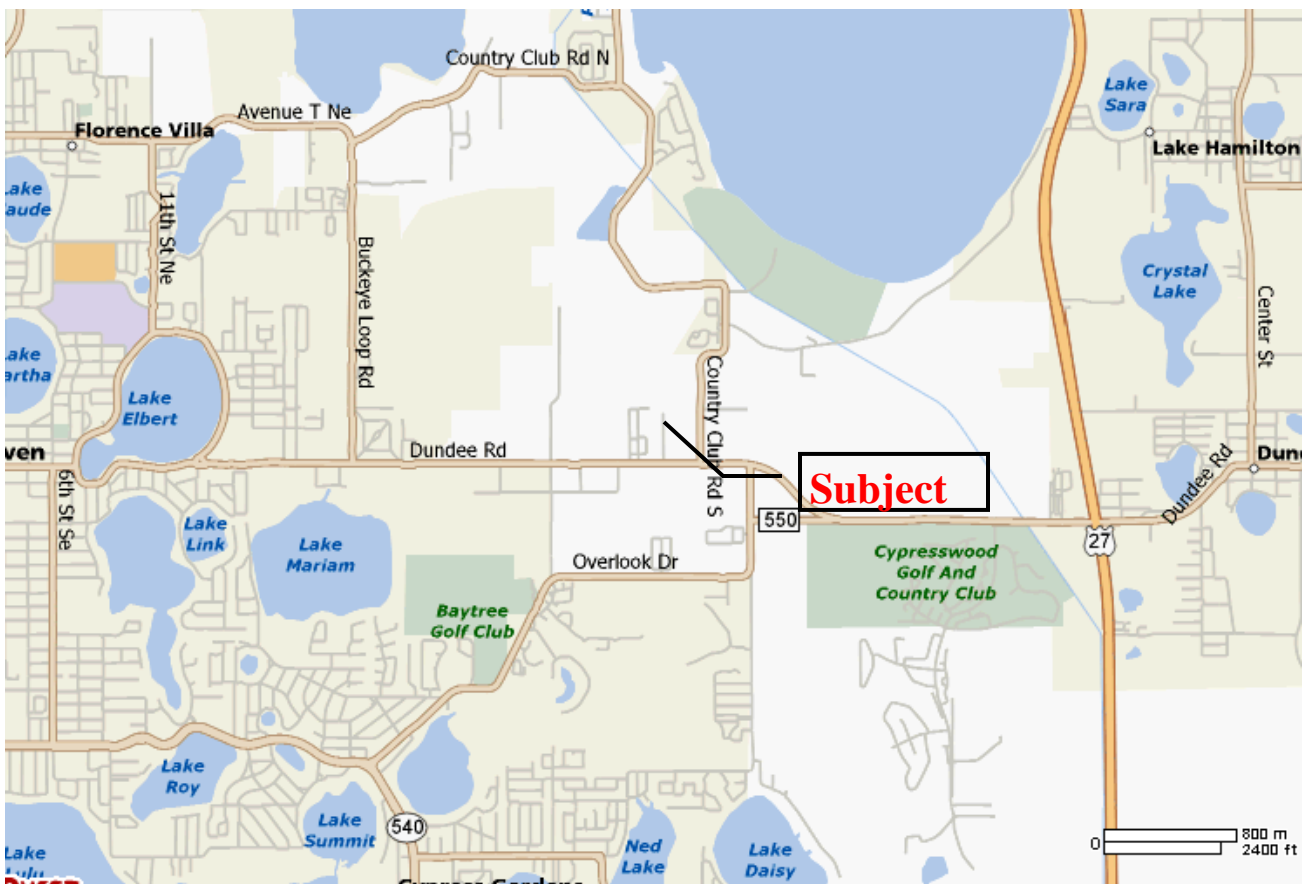


**R. Chris Florence, CCIM**  
863.557.7953 (Cell)  
[www.crosbyandassociates.net](http://www.crosbyandassociates.net)

CROSBY & ASSOCIATES, INC.

\$3.25 per s.f. Base  
Lease

# MAPS & FLOOR PLANS



Crosby & Associates, Inc.  
505 Avenue A NW, Suite 306  
Winter Haven, FL 33881  
863.293.5600-Office - 888.823.0412-Fax - 863.557.7953-Cell  
www.crosbyandassociates.net - www.ccimpro.com